

WATER FACILITIES:

Municipal ownership, stand pipe system, water from three 6" wells each, 200' deep, from river in emergency, through 12" intake by 2 compound duplex M^o Connet P. Co. 12" x 10' x 12' 10" capacity, 1000 gals per min each through 10" pipe to 2500 gal steel tank on 10' steel tower, (barometric pressure 27 lbs, fire pressure 45 lbs per sq inch) hose through 4 miles 6" x 8" 10" mains and 1000 to 4000 to 40 double hydrants, (average daily consumption 250,000 gals)

Fire Dept:

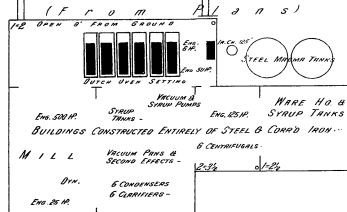
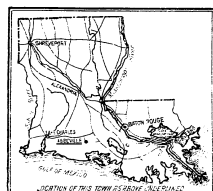
Not organized, 4 hose carts each carrying 400 ft hose. Fire alarm whistle at Power plant, operated by telephone.
Streets level, no street public lights, electric.
No enforced fire limits.



INDEX.

STREETS.	CHART.	STREETS.	CHART.
Charity, 24-39	101-128	North, 2	Convent Du Mont Carmel, 1
Cherry, 101-128	101-128	Peace, 2	County Court House and Jail, 3
Concord, 2	101-128	Prairie Ave., 2	Fire Department Station, 8
East, 301-314	401-418	Railroad Ave., 2	Jefferson near North, 2
Edwards, 301-314	401-418	Vermilion River to Wash'n	Vermilion Street, 1
Frank's Alley, 7 & 8	401-418	Washington to State	First Baptist Church, 1
Fairview, 301-310	401-418	St. Charles, 3 & 7	Presbyterian Church, 1
First Ave., 301-310	401-418	Valerie, 501-540	Godechaux Brick Co., 6
Jefferson to State	401-418	Victor, 501-540	Independent Rice Warehouse, 6
Jefferson, 195-207	208-212	South, 195-198	Home Ice Factory, 8
Godechaux Ave., 401-440	501-511	State, 195-198	I. & V. R. R. Depots, 5
Guegnon Ave., 401-440	501-511	State, 195-198	King Memorial M. E. Church (Negro), 1
Jefferson, 195-207	208-212	State, 195-198	Louisiana State Rice Milling Co., Mill No. 2, 6
Jefferson, 208-212	213-218	State, 195-198	Methodist Episcopal Church, 3
Lafayette, 101-111	112-118	State, 195-198	Opera House, 3
Lafayette, 112-118	119-122	State, 195-198	Planters Rice Mill, 6
Lafayette, 119-122	123-128	State, 195-198	Pleasant Green Baptist Church (Negro), 6
Lafayette, 123-128	129-134	State, 195-198	Post Office, 3
Louisiana, 301-314	401-418	State, 195-198	St. Anne's Roman Catholic Church, 2
Louisiana, 301-314	401-418	State, 195-198	Mary's Congregational Church, 7
Louisiana, 301-314	401-418	State, 195-198	Southern Pacific R. R. Depots, 6
Louisiana, 301-314	401-418	State, 195-198	Steen, C. S., Cotton Gin, 2
Louisiana, 301-314	401-418	State, 195-198	Summers Lumber Co., 2
Louisiana, 301-314	401-418	State, 195-198	Veranda Hotel, 3
Louisiana, 301-314	401-418	State, 195-198	Vermilion Sugar Co., 1
Louisiana, 301-314	401-418	State, 195-198	Waters-Pierce Oil Co., 7
Louisiana, 301-314	401-418	State, 195-198	

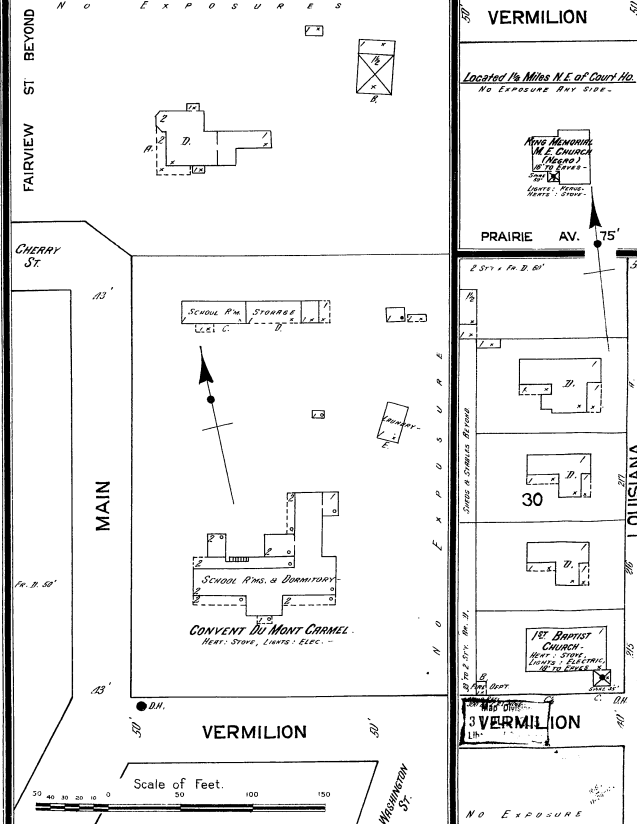
NOTE.—House Numbers given are arbitrary.

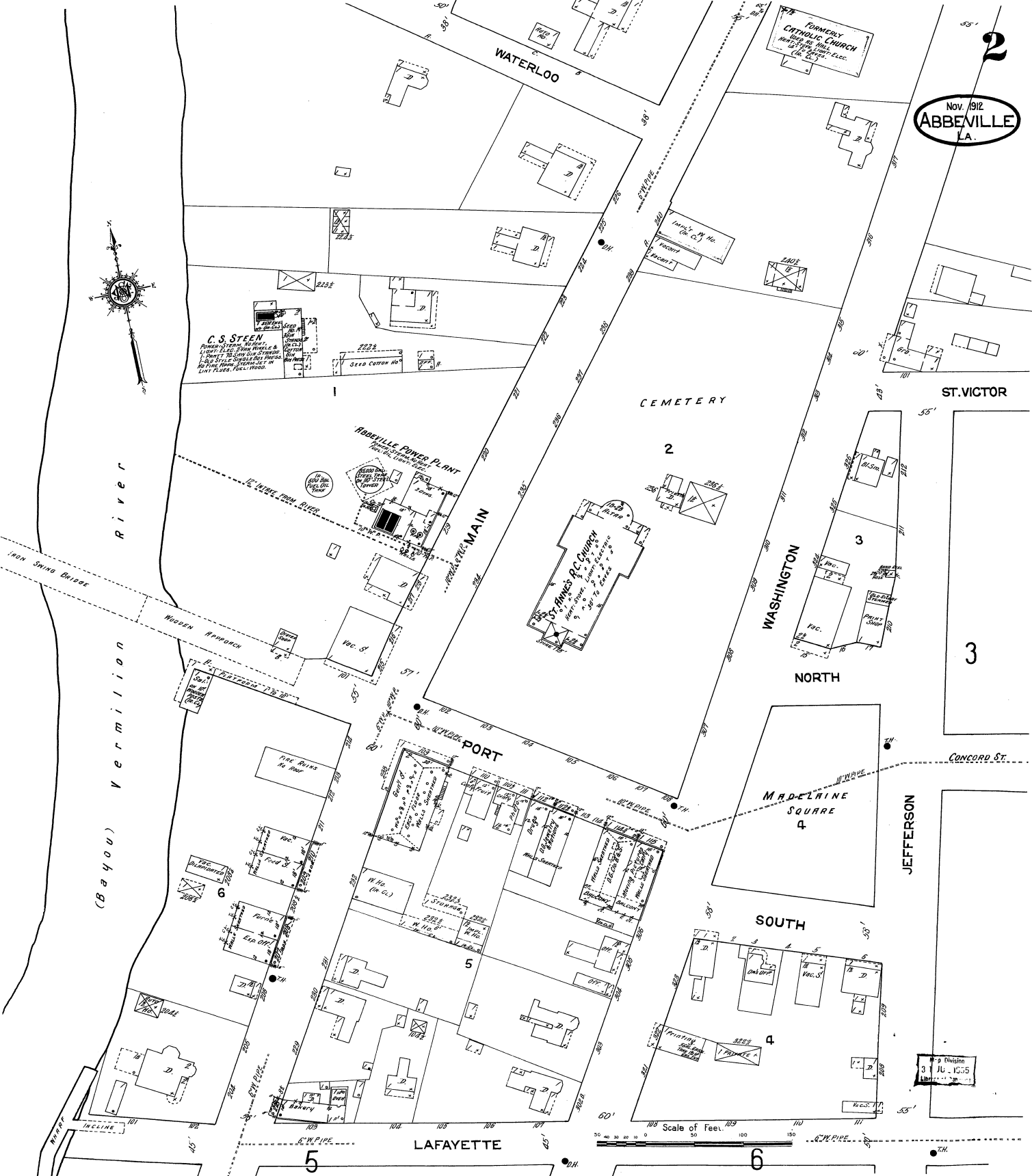


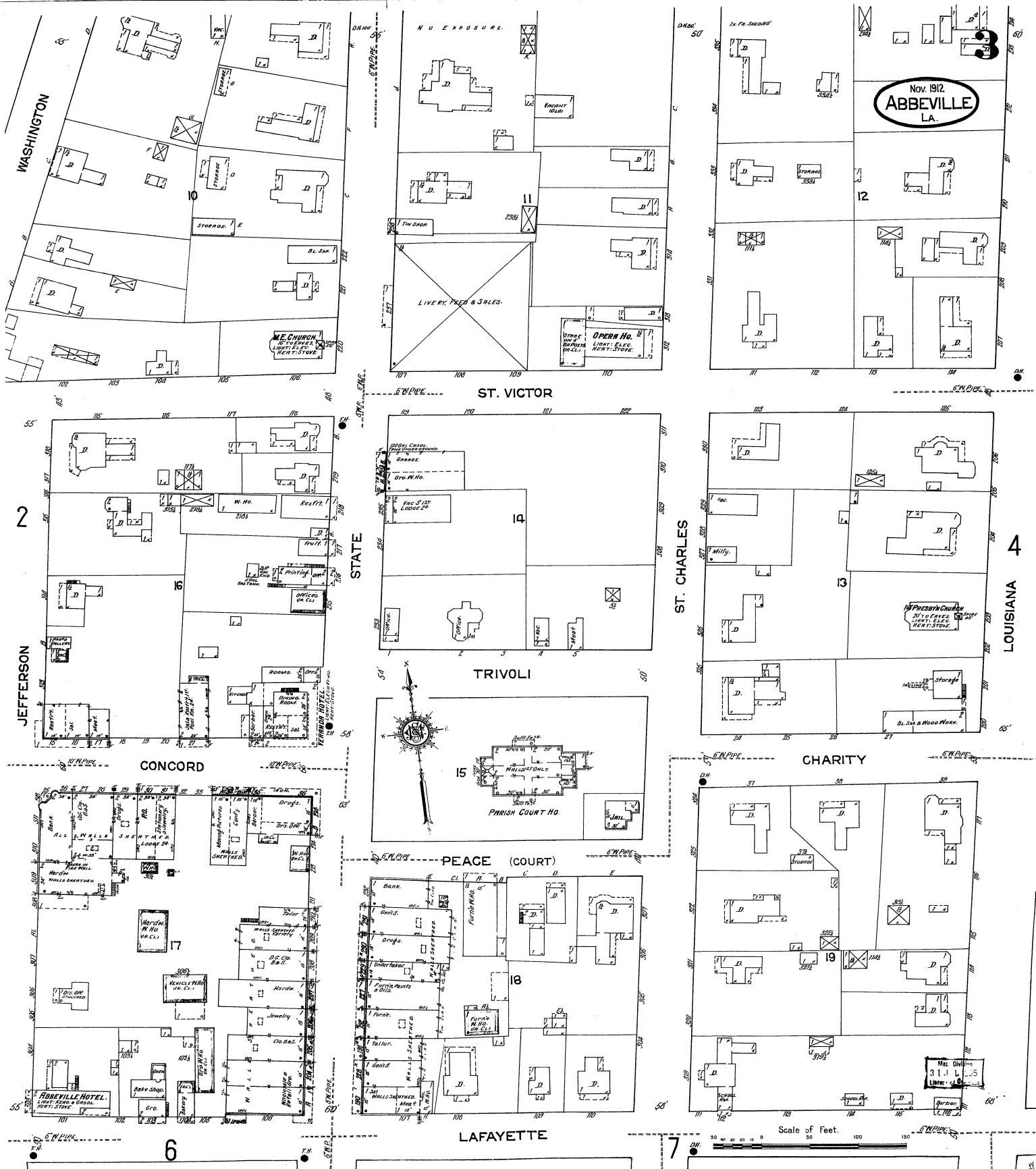
VERMILION SUGAR CO. - LTD.

CAP. 1200 TONS -
NIGHT & SUNDAY MATCHING COX TO BE INSTALLED (MORE
OWN DYN. NO HEAT EXCEPT STEAM IN OIL. PUNCH STEAM,
FUEL: BRUISE & FUEL OIL.

Located 1 Mile W.S.W. of Court Ho.
NO EXPOSURES ANY SIDE.







Nov. 1912
ABBEVILLE
LA.

ST. VICTOR

ST. CHARLES

LOUISIANA

TRIVOLI

CHARITY

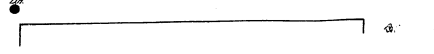
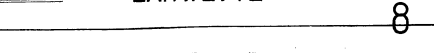
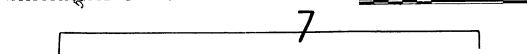
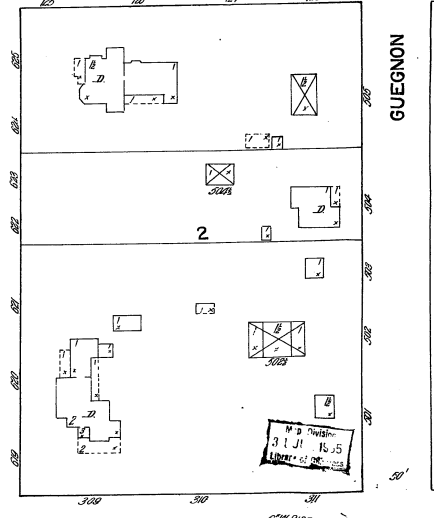
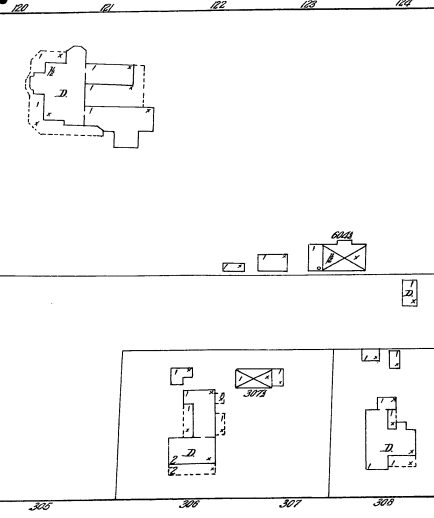
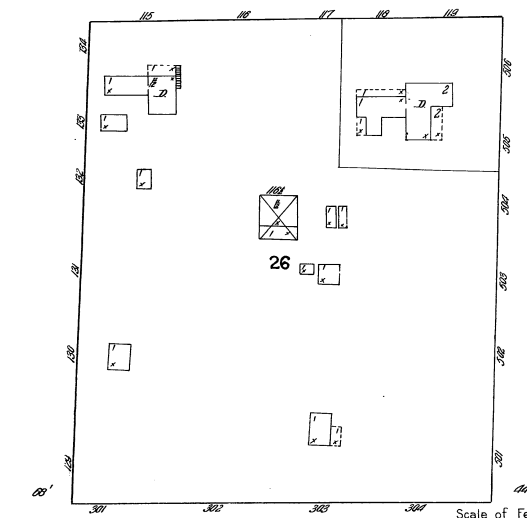
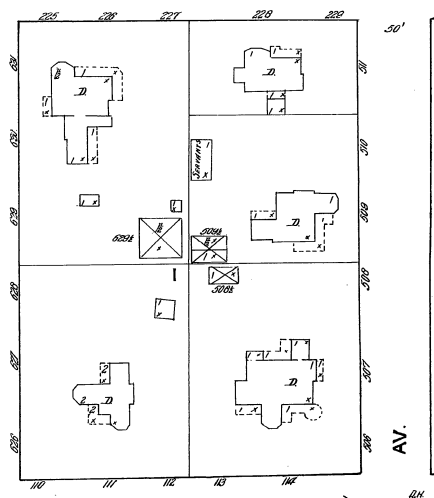
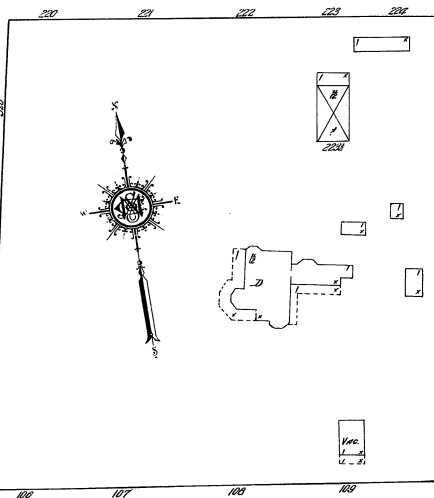
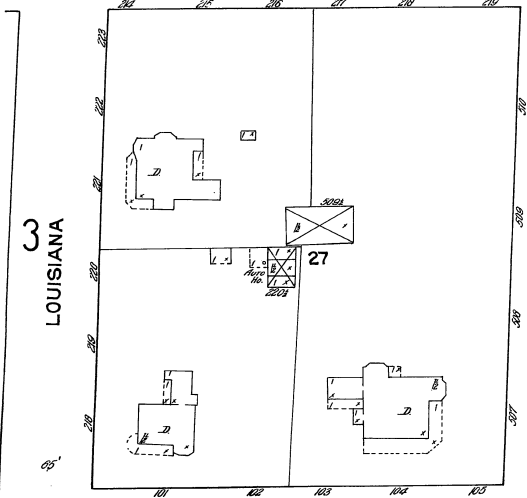
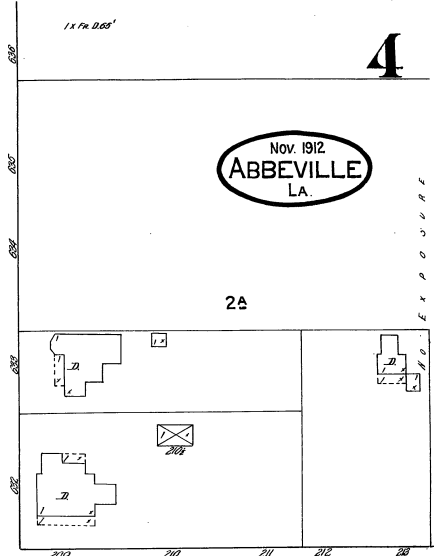
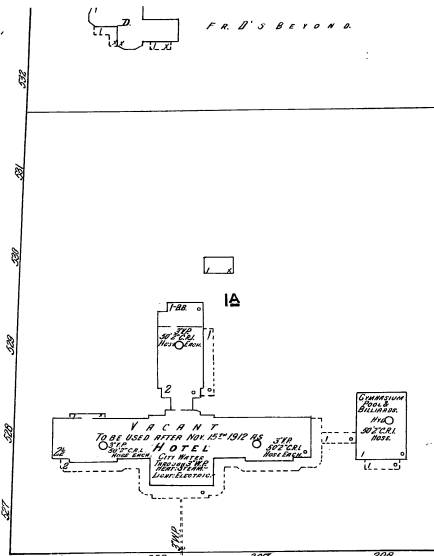
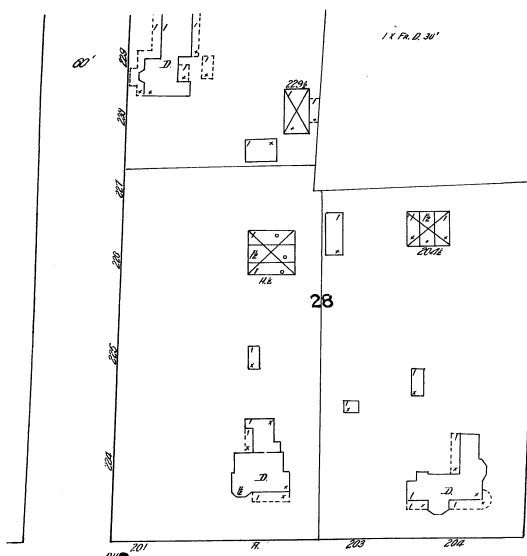
PEACE (COURT)

LAFAYETTE

Scale of Feet.

6

7



3 LOUISIANA

EAST

ST. VALERIE (ST. VALERIE AV.)

AV.

GUEGNON

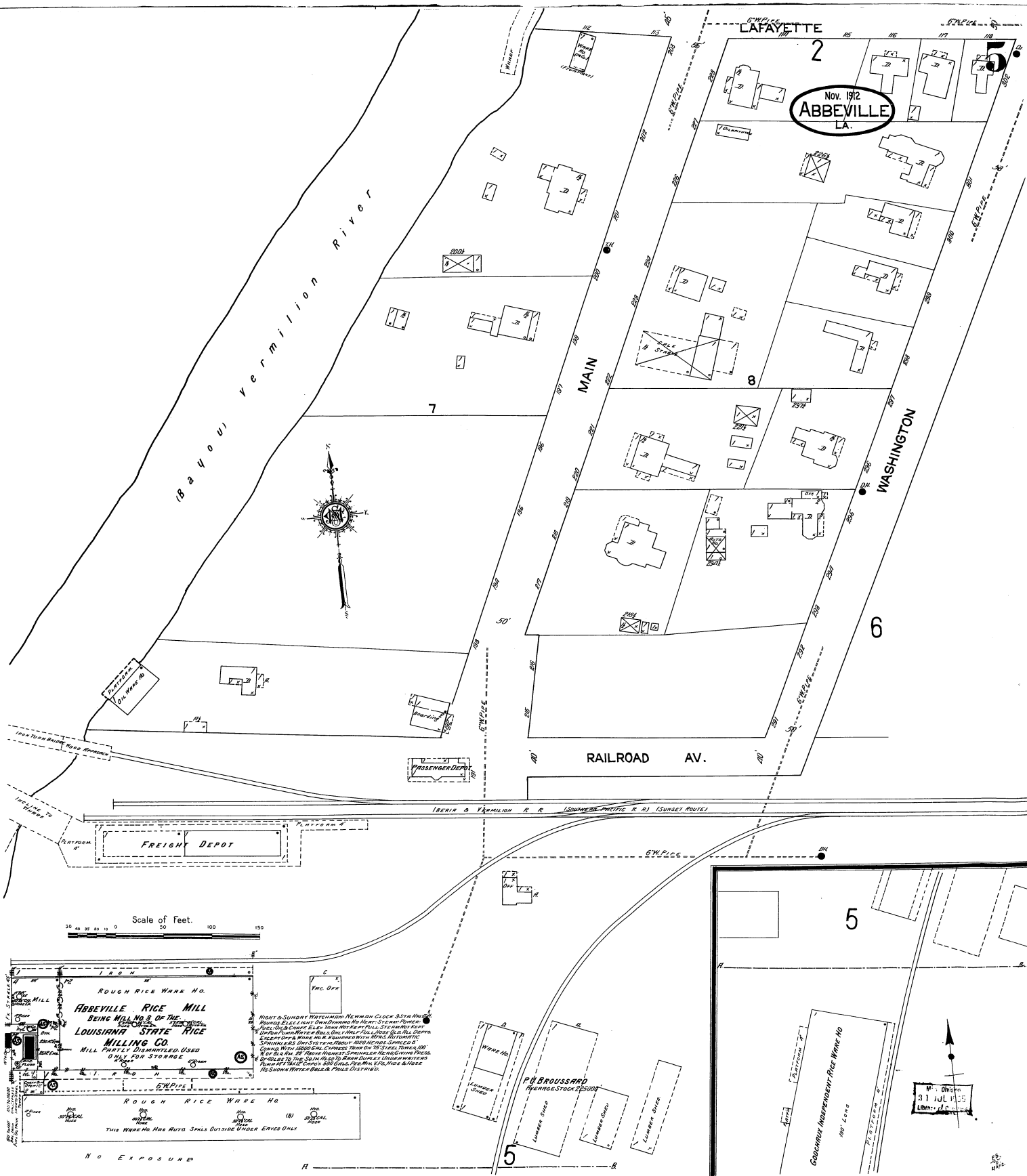
CHARITY

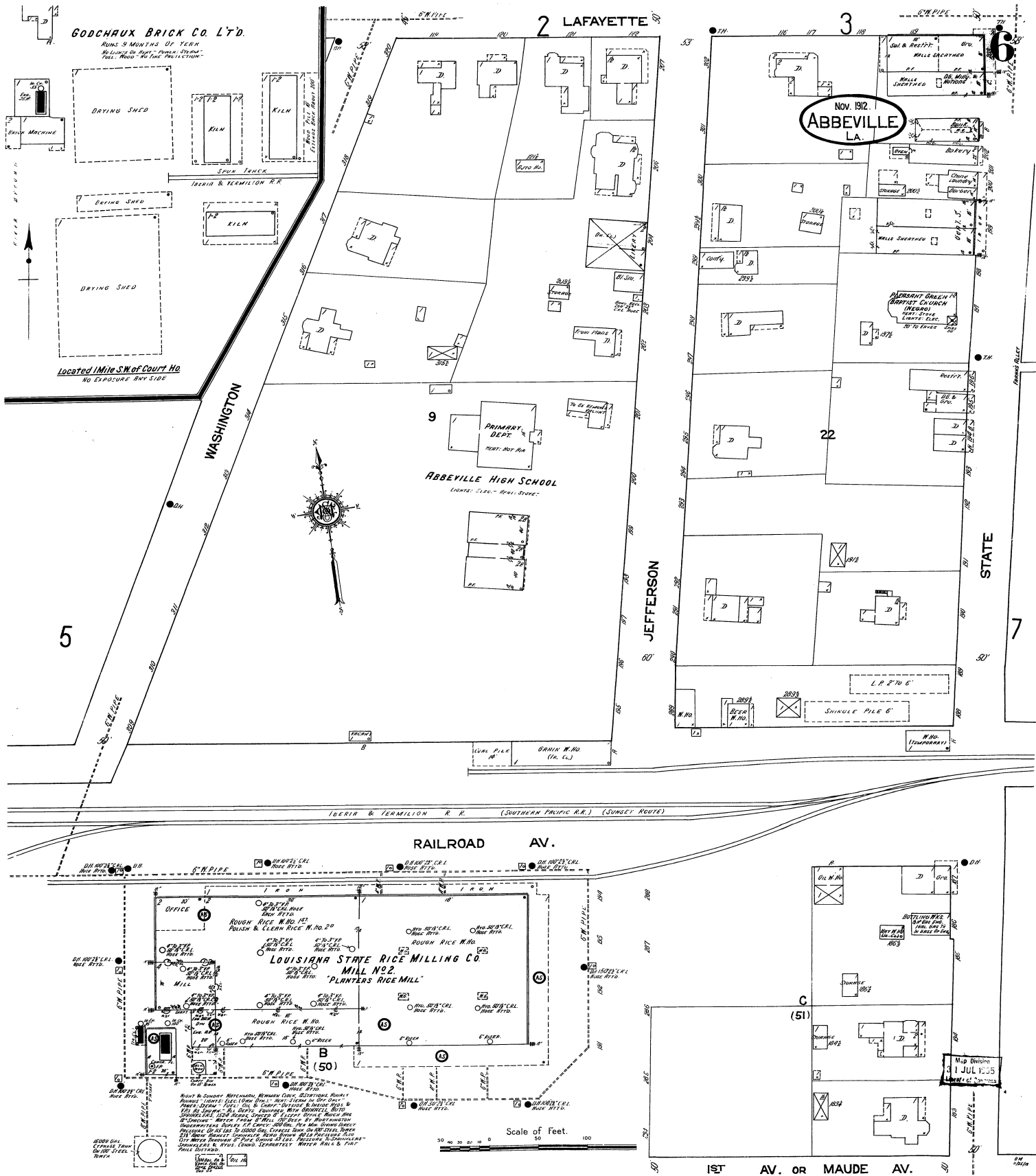
LAFAYETTE

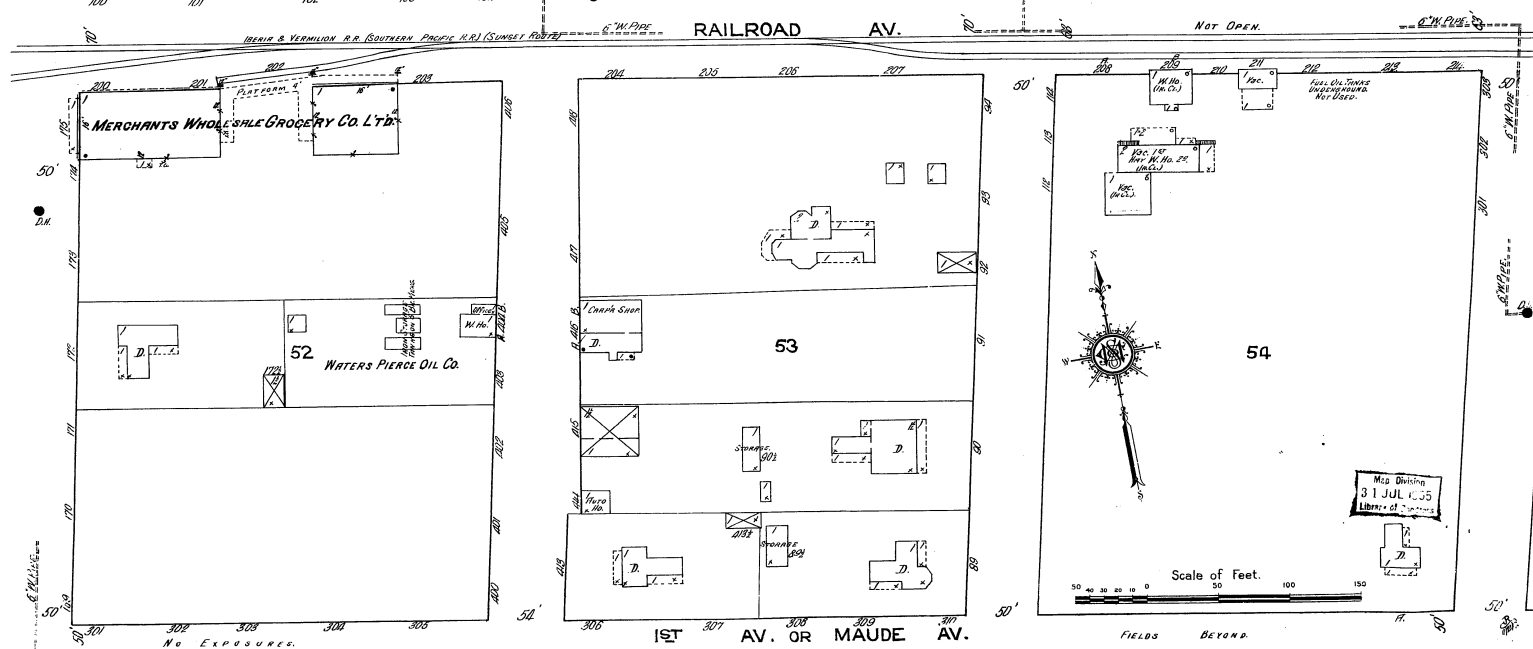
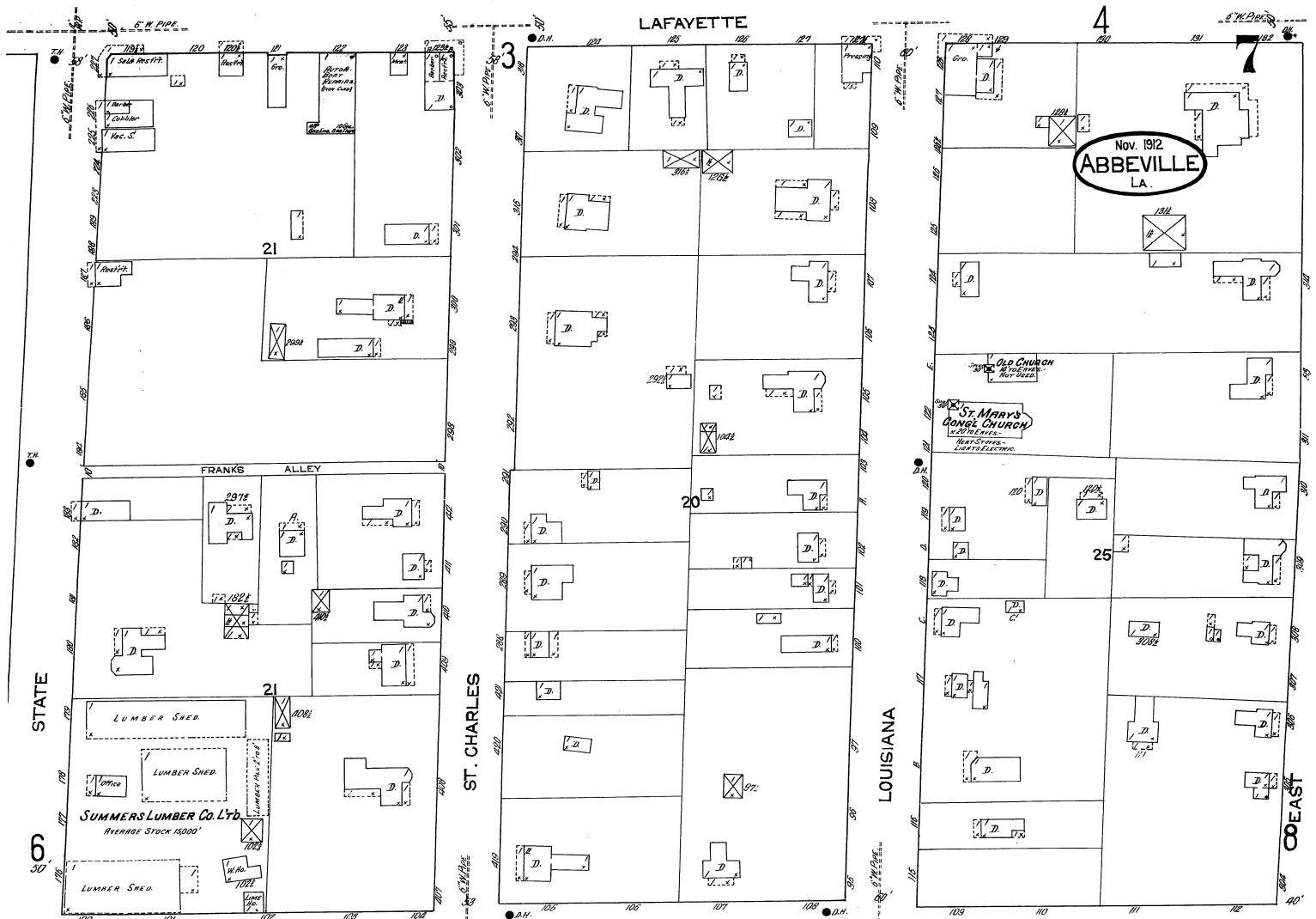
Nov. 1912
ABBEVILLE
LA.

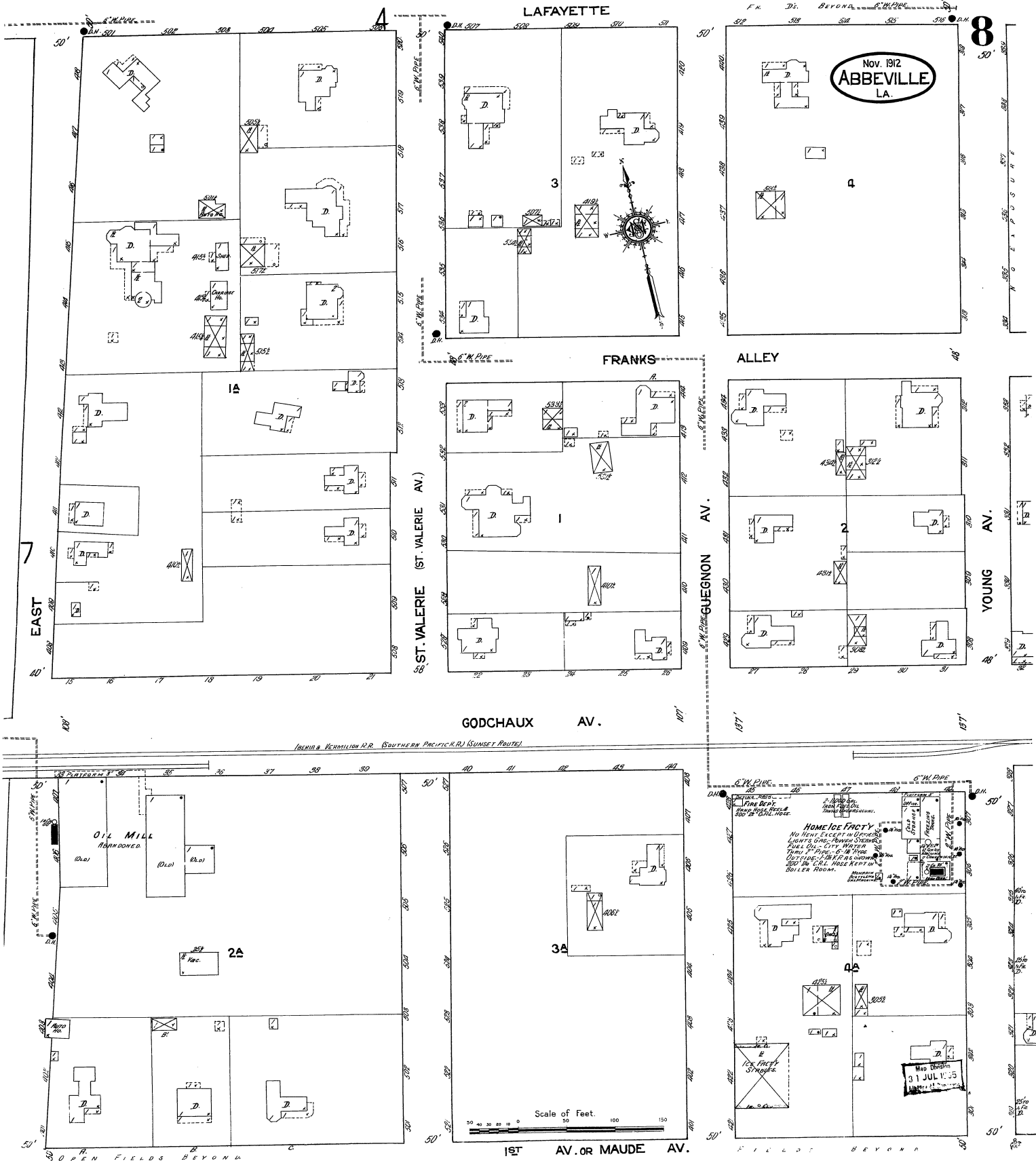
4

Scale of Feet.









LAFAYETTE

Nov. 1912
ABBEVILLE
LA.

FRANKS

ALLEY

GODCHAUX AV.

1ST AV. OR MAUDE AV.

INDIAN & VERMILION R.R. (SOUTHERN PACIFIC R.R.) (SUNSET ROUTE)

Scale of Feet.

HOME ICE FACTY
No Heat Except in Offices
LIGHTS GAS POWER STEAM
FULL OIL CITY WATER
PUMP & PIPES & SINKS
OUTSIDE: 2 BATHS OUTSIDE
300 LB. CIL. HAND KEPT IN
BOILER ROOM.

Map drawn
31 JUL 1915