

WATER FACILITIES:

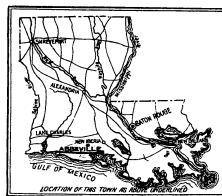
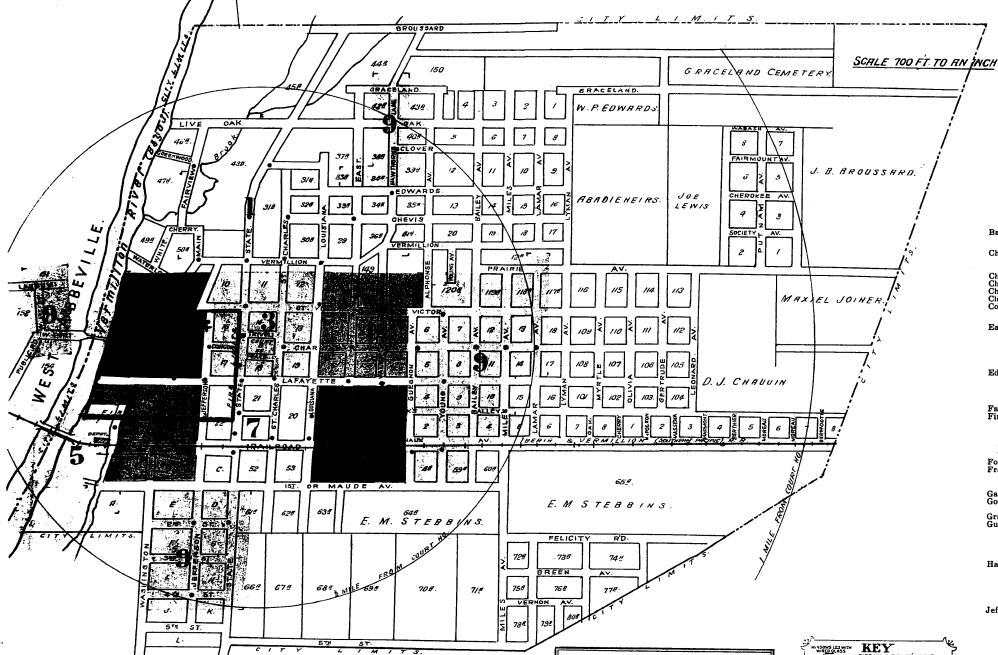
Municipal water works direct pumping & gravity distributed system (for location of pump house see sheet 20) draw electric from 14000 volt line, capacity 1200 gals. per min. two wells are drilled by hand, discharging into 20000 gal. concrete reservoir and three-stage centrifugal pump discharges directly from the third well & discharges into 85,000 gal. steel gravity tank elevated 100 ft. above ground, two stages of centrifugal pumps takes independent suction from reservoir & discharges into gravity tank & main. Two electric service pumps with 4" suction from reservoir & discharges into gravity tank & main. 3" or 4" or 6" & 8" cast iron mains, laid in 1908 & subsequently 45 double & 15 triple 11 1/2" high. Note: There are numerous pipe hydrants on 2" mains, not recognized as important for fire protection. Domestic pressure 47 lbs. Fire pressure up to 125 lbs.

FIRE DEPT.

For location see sheet 192-black 3) Not organized. One paid man, acts as chief & custodian of apparatus & volunteer assistance. Apparatus consists of one Ford 14 Franklin double combination pumper & Chem. wagon carries 800 of new 2 1/2 horse one 2" hose, 20' extension ladder, one 55 gal. chemical tank & 200 of 1/2" chemical hose, two 2 1/2 gal. chemical extinguishers.

Fire alarm of water works Federal Graphophone Electric horns operated by an electric motor.

Fires are reported by telephone.



KEY

1. METAL CORNER, SEE ROOF
2. FIRE ALARM, SEE ADVISORY
3. FIRE ALARM, SEE ADVISORY
4. FIRE ALARM, SEE ADVISORY
5. FIRE ALARM, SEE ADVISORY
6. FIRE ALARM, SEE ADVISORY
7. FIRE ALARM, SEE ADVISORY
8. FIRE ALARM, SEE ADVISORY
9. FIRE ALARM, SEE ADVISORY
10. FIRE ALARM, SEE ADVISORY
11. FIRE ALARM, SEE ADVISORY
12. FIRE ALARM, SEE ADVISORY
13. FIRE ALARM, SEE ADVISORY
14. FIRE ALARM, SEE ADVISORY
15. FIRE ALARM, SEE ADVISORY
16. FIRE ALARM, SEE ADVISORY
17. FIRE ALARM, SEE ADVISORY
18. FIRE ALARM, SEE ADVISORY
19. FIRE ALARM, SEE ADVISORY
20. FIRE ALARM, SEE ADVISORY
21. FIRE ALARM, SEE ADVISORY
22. FIRE ALARM, SEE ADVISORY
23. FIRE ALARM, SEE ADVISORY
24. FIRE ALARM, SEE ADVISORY
25. FIRE ALARM, SEE ADVISORY
26. FIRE ALARM, SEE ADVISORY
27. FIRE ALARM, SEE ADVISORY
28. FIRE ALARM, SEE ADVISORY
29. FIRE ALARM, SEE ADVISORY
30. FIRE ALARM, SEE ADVISORY
31. FIRE ALARM, SEE ADVISORY
32. FIRE ALARM, SEE ADVISORY
33. FIRE ALARM, SEE ADVISORY
34. FIRE ALARM, SEE ADVISORY
35. FIRE ALARM, SEE ADVISORY
36. FIRE ALARM, SEE ADVISORY
37. FIRE ALARM, SEE ADVISORY
38. FIRE ALARM, SEE ADVISORY
39. FIRE ALARM, SEE ADVISORY
40. FIRE ALARM, SEE ADVISORY
41. FIRE ALARM, SEE ADVISORY
42. FIRE ALARM, SEE ADVISORY
43. FIRE ALARM, SEE ADVISORY
44. FIRE ALARM, SEE ADVISORY
45. FIRE ALARM, SEE ADVISORY
46. FIRE ALARM, SEE ADVISORY
47. FIRE ALARM, SEE ADVISORY
48. FIRE ALARM, SEE ADVISORY
49. FIRE ALARM, SEE ADVISORY
50. FIRE ALARM, SEE ADVISORY
51. FIRE ALARM, SEE ADVISORY
52. FIRE ALARM, SEE ADVISORY
53. FIRE ALARM, SEE ADVISORY
54. FIRE ALARM, SEE ADVISORY
55. FIRE ALARM, SEE ADVISORY
56. FIRE ALARM, SEE ADVISORY
57. FIRE ALARM, SEE ADVISORY
58. FIRE ALARM, SEE ADVISORY
59. FIRE ALARM, SEE ADVISORY
60. FIRE ALARM, SEE ADVISORY
61. FIRE ALARM, SEE ADVISORY
62. FIRE ALARM, SEE ADVISORY
63. FIRE ALARM, SEE ADVISORY
64. FIRE ALARM, SEE ADVISORY
65. FIRE ALARM, SEE ADVISORY
66. FIRE ALARM, SEE ADVISORY
67. FIRE ALARM, SEE ADVISORY
68. FIRE ALARM, SEE ADVISORY
69. FIRE ALARM, SEE ADVISORY
70. FIRE ALARM, SEE ADVISORY
71. FIRE ALARM, SEE ADVISORY
72. FIRE ALARM, SEE ADVISORY
73. FIRE ALARM, SEE ADVISORY
74. FIRE ALARM, SEE ADVISORY
75. FIRE ALARM, SEE ADVISORY
76. FIRE ALARM, SEE ADVISORY
77. FIRE ALARM, SEE ADVISORY
78. FIRE ALARM, SEE ADVISORY
79. FIRE ALARM, SEE ADVISORY
80. FIRE ALARM, SEE ADVISORY
81. FIRE ALARM, SEE ADVISORY
82. FIRE ALARM, SEE ADVISORY
83. FIRE ALARM, SEE ADVISORY
84. FIRE ALARM, SEE ADVISORY
85. FIRE ALARM, SEE ADVISORY
86. FIRE ALARM, SEE ADVISORY
87. FIRE ALARM, SEE ADVISORY
88. FIRE ALARM, SEE ADVISORY
89. FIRE ALARM, SEE ADVISORY
90. FIRE ALARM, SEE ADVISORY
91. FIRE ALARM, SEE ADVISORY
92. FIRE ALARM, SEE ADVISORY
93. FIRE ALARM, SEE ADVISORY
94. FIRE ALARM, SEE ADVISORY
95. FIRE ALARM, SEE ADVISORY
96. FIRE ALARM, SEE ADVISORY
97. FIRE ALARM, SEE ADVISORY
98. FIRE ALARM, SEE ADVISORY
99. FIRE ALARM, SEE ADVISORY
100. FIRE ALARM, SEE ADVISORY



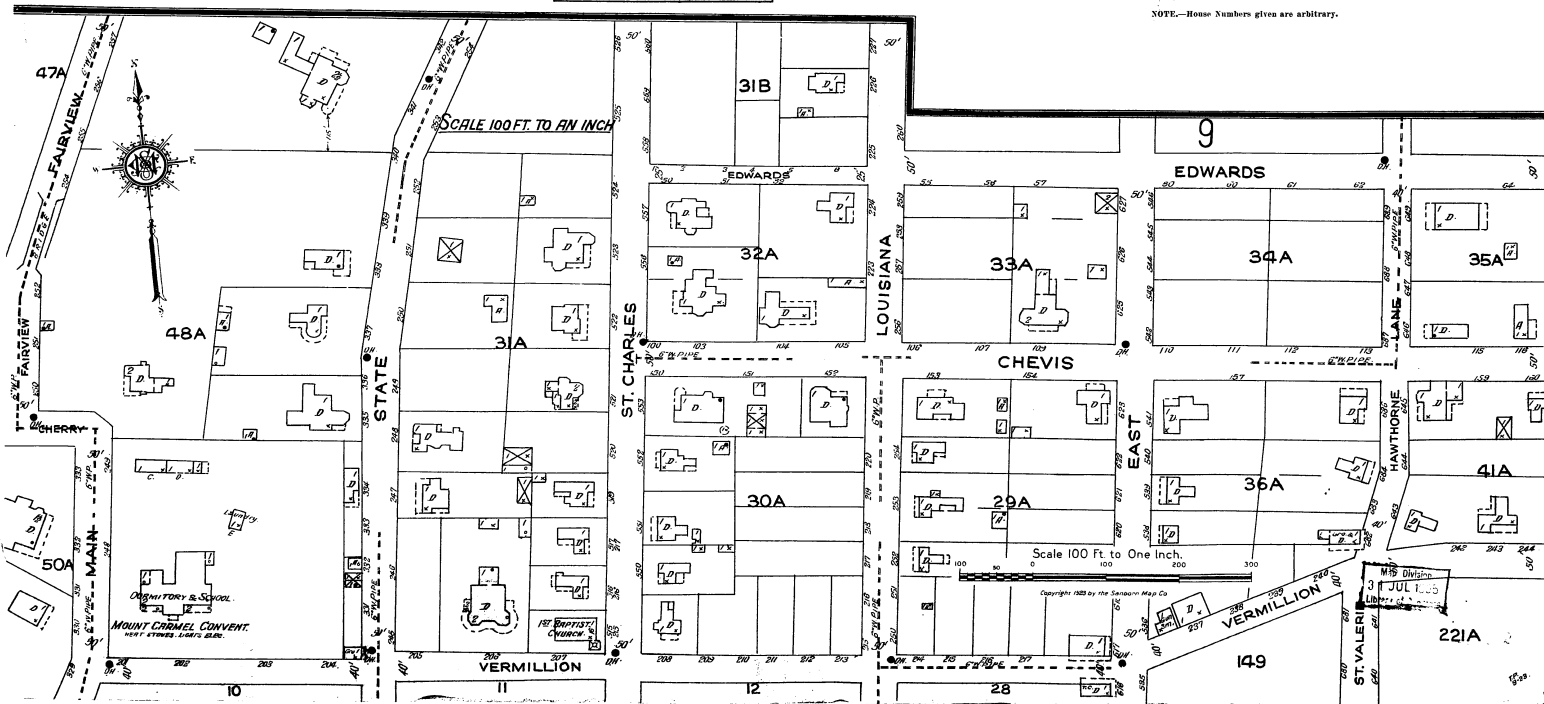
SURVEYED BY
LOUISIANA FIRE PREVENTION BUREAU

Map Division
JUL 2 1923
Library of Congress

INDEX

STREETS	INDEX	STREETS	INDEX
Bailey Ave.	9	Maude Ave.	9
Charity	9	North	9
Charles	9	Oak	9
Chevin	9	Peace	9
Concord	9	Port	9
East	9	Public Ave.	9
Edwards	9	Railroad Ave.	9
Fairview	9	St. Charles	9
First	9	St. John	9
Fourth	9	St. Louis	9
Garland	9	St. Mary	9
Godchaux	9	St. Peter	9
Graceland	9	St. Vincent	9
Hawthorne Lane	9	St. Xavier	9
Jefferson	9	St. Yvonne	9
Lafayette	9	St. Zeno	9
Lamar	9	St. Zeno	9
Landry	9	St. Zeno	9
Louisiana	9	St. Zeno	9
Main	9	St. Zeno	9
Vermillion	9	St. Zeno	9
West	9	St. Zeno	9
W. Edwards	9	St. Zeno	9
W. Jefferson	9	St. Zeno	9
W. Main	9	St. Zeno	9
W. North	9	St. Zeno	9
W. Oak	9	St. Zeno	9
W. Peace	9	St. Zeno	9
W. Port	9	St. Zeno	9
W. Public Ave.	9	St. Zeno	9
W. Railroad Ave.	9	St. Zeno	9
W. St. Charles	9	St. Zeno	9
W. St. John	9	St. Zeno	9
W. St. Louis	9	St. Zeno	9
W. St. Mary	9	St. Zeno	9
W. St. Peter	9	St. Zeno	9
W. St. Vincent	9	St. Zeno	9
W. St. Xavier	9	St. Zeno	9
W. St. Yvonne	9	St. Zeno	9
W. St. Zeno	9	St. Zeno	9

NOTE—House Numbers given are arbitrary.

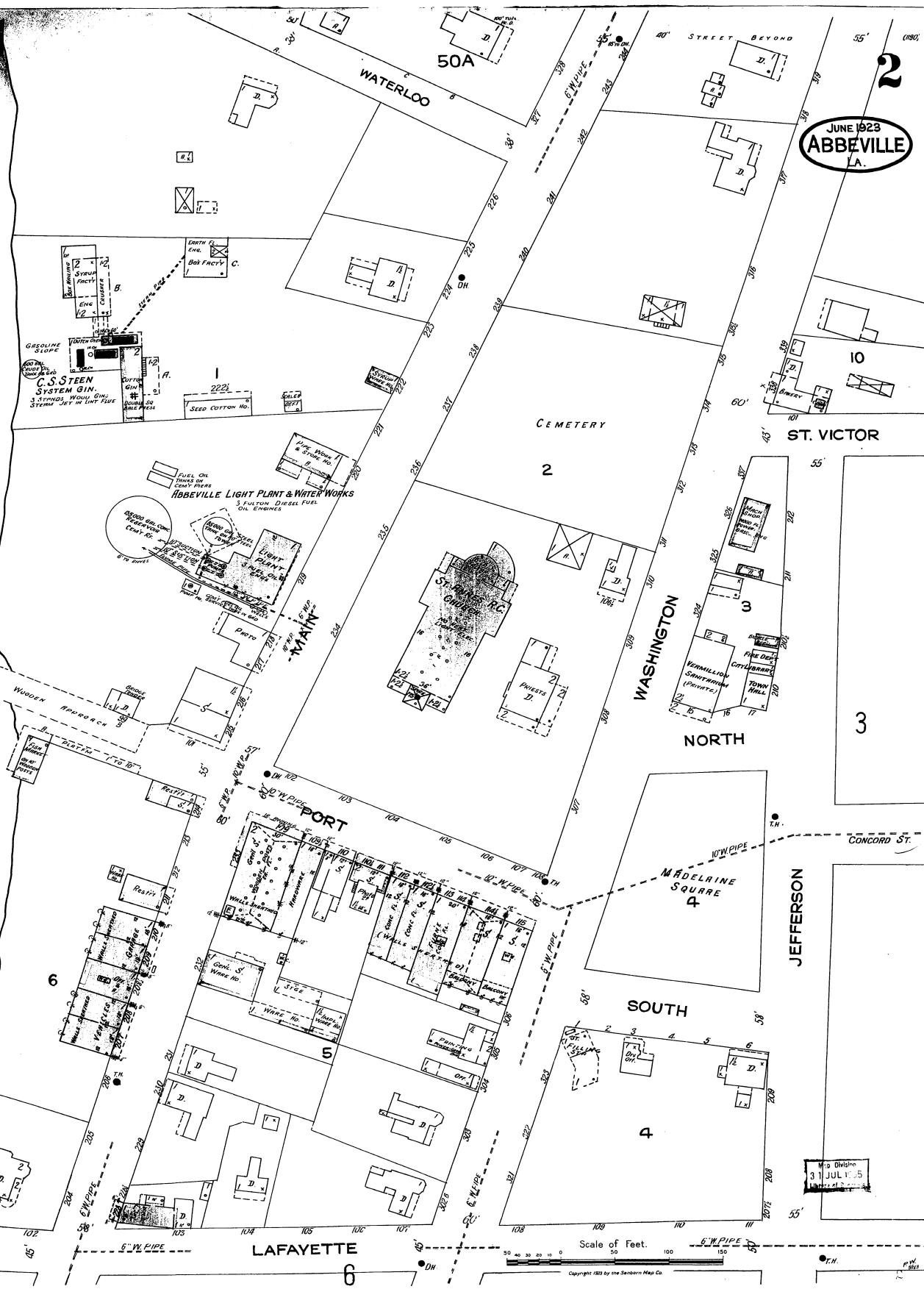


2



Vermilion River

(Bayou)



JUNE 1923
ABBEVILLE
LA.

JEFFERSON

WASHINGTON
NORTH

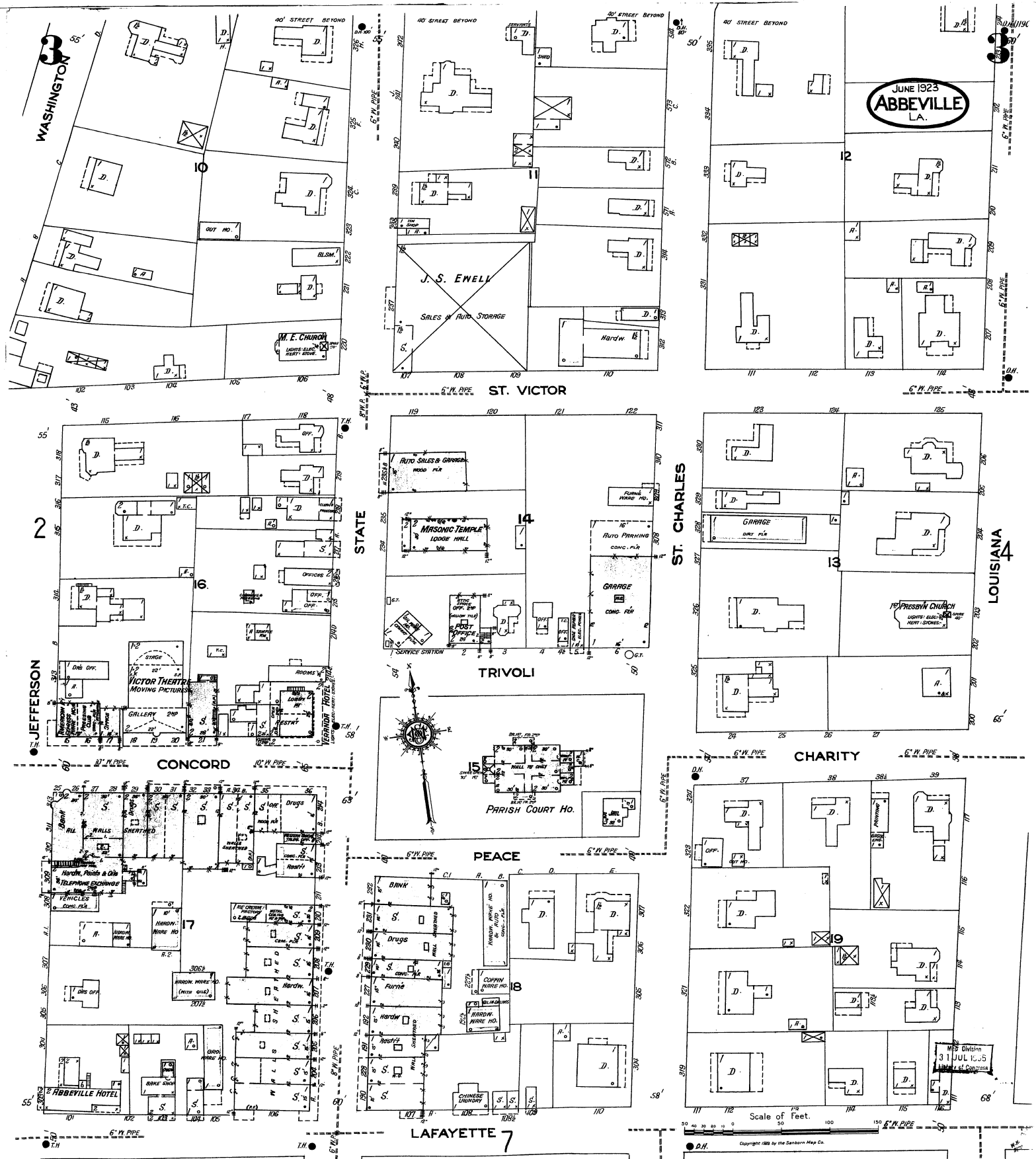
SOUTH

LAFAYETTE

MADELAINE
SQUARE

CONCORD ST.

Map Division
3 JUL 1925



JUNE 1923
ABBEVILLE
LA.

LOUISIANA
4

ST. VICTOR

ST. CHARLES

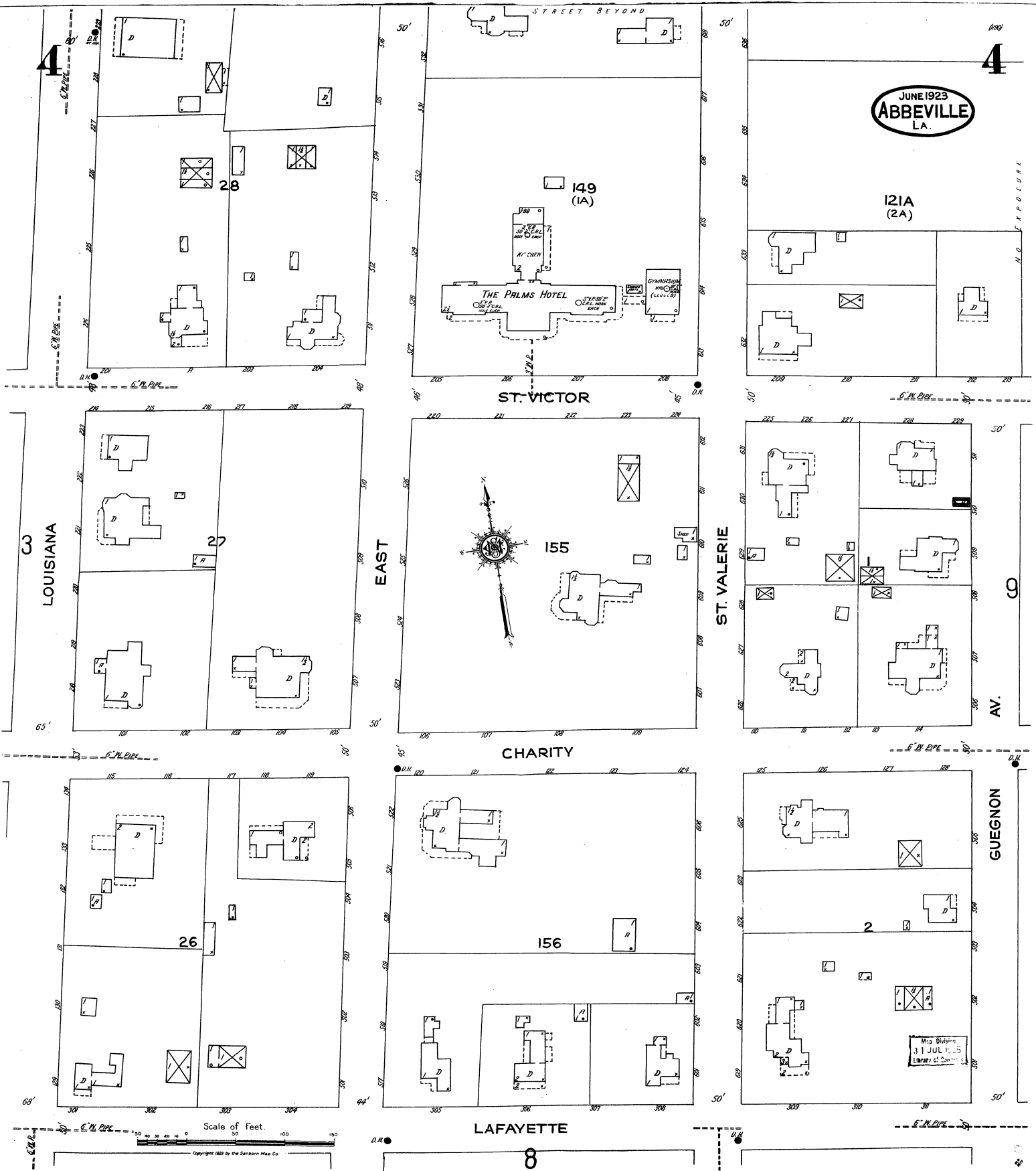
TRIVOLI

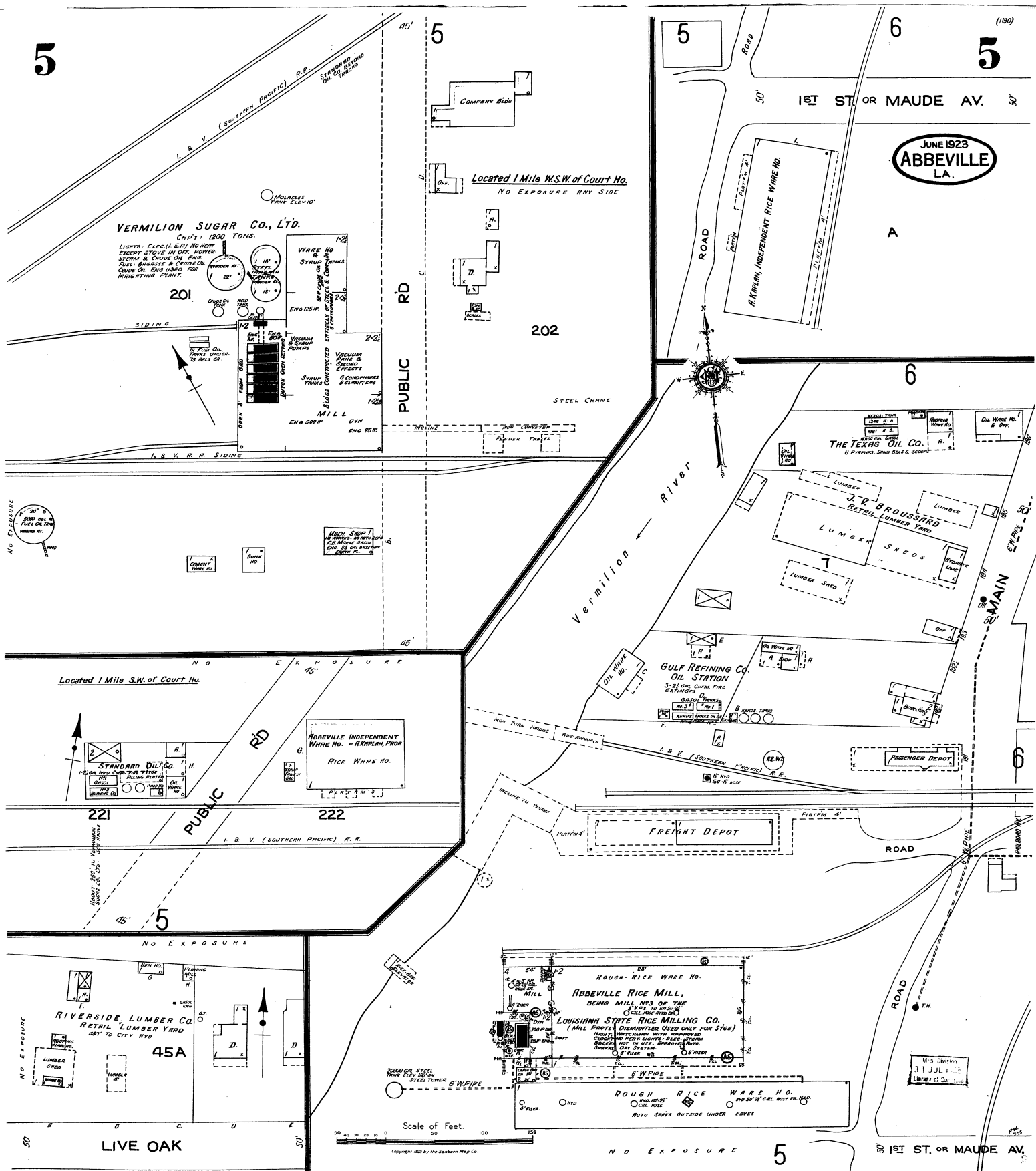
CHARITY

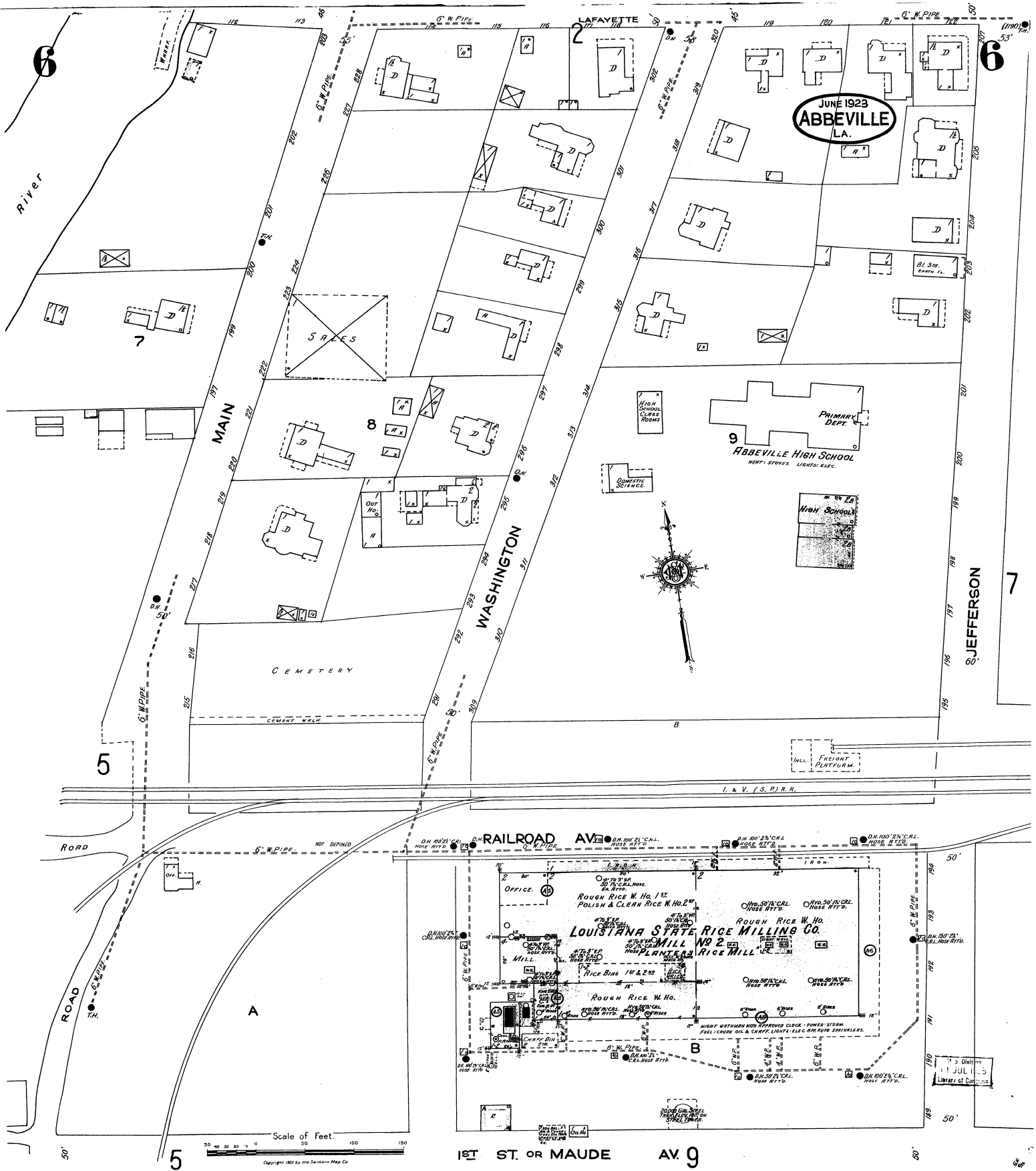
PEACE

LAFAYETTE
7

Scale of Feet.
Copyright 1923 by the Sanborn Map Co.







JUNE 1923
ABBEVILLE
LA.

ABBEVILLE HIGH SCHOOL
HERF. STONES. LIGHTS. ELEC.

LOUISIANA STATE RICE MILLING CO.
MILL NO. 2
PLANTERS RICE MILL

1ST ST. OR MAUDE AV. 9

Scale of Feet.
Copyright 1923 by the Southern Map Co.

